

James Campbell

Painters & Decorators

We are pleased
to be associated with

WEYMOUTH LIBRARY

All contract work
undertaken, specialists
in wall coverings.



72 Smugglers Lane North,
Highcliffe, Dorset. BH23 4NL
Telephone Highcliffe

277482



John Loving

--- BRICKWORK CONTRACTOR

... was pleased to be appointed by the main contractor, W Hayward & Sons of Bournemouth, for all face brickwork and blockwork for the new library and takes this opportunity to wish the Library every success for the future.

Telephone
Maiden Newton
0300 20798

3 North Park
Frampton
Dorchester

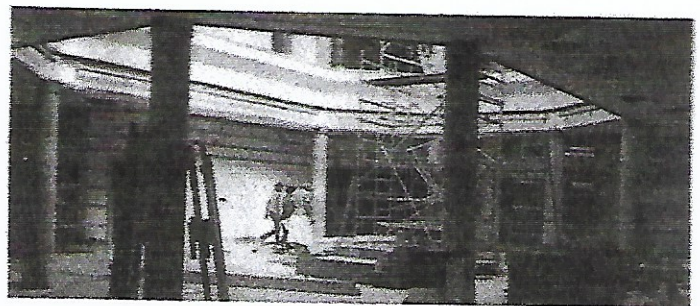
XIV

Design

The County Librarian's detailed brief to the County Architect requested a total floor area of a least 15,000 square feet within an inviting and distinctive exterior which disclosed the nature of its activities to the passer-by. The geographical and physical characteristics of the corner site, and its environment, had a significant effect on the final design. The building had to follow the street line of existing properties in Great George Street, retain the pavement in front, and turn the corner easily and naturally into Mulberry Terrace. Thus, a half octagon shapes the corner of the building and dominates the vista down School Street from St. Thomas Street. This octagonal form is echoed in the distinctive design of the windows and of the interior. Although on two storeys, the building is fully accessible by disabled people.

A separate entrance off Mulberry Terrace provides access to the Citizens' Advice Bureau, which has separate premises within the library building, and to the Mulberry Exhibition Gallery and Meeting Room on the first floor of the library, when they are in use out of library opening hours.

To enhance natural lighting obtained from the windows on two sides of the building, large roof lights have been installed over the generous central void and gallery. To avoid unpleasant overheating in direct sunlight, blinds on south-facing roof-lights automatically close when the interior temperature reaches a defined level, but the sunlight serves to reduce winter heating costs. The building has been designed to be as energy saving as possible and all finishes have been chosen for



is via radiators with warm air and mechanical ventilation, and the lighting system has been designed to provide an even light throughout, with strip lights defining the perimeters. A sophisticated system of floor ducting will ease any future electrical modifications, particularly the advances in computer data cabling which may be needed in the twenty-first century.

The attractive central void visually connects the ground floor with the upper storey and gallery. Ceiling, carpet, and shelving layouts draw attention from the entrance area to the main staircase which accesses the first floor. In the Children's Library, the headroom has been lowered to appropriately reduce the scale of this area.

A link with the past history of the site is maintained in the library by the incorporating of a plaque into the wall of the main staircase, which previously was located in the exterior wall of the old St. Mary's School and commemorates George III's declaration in 1805 to Joseph Lancaster, a leading educationalist of the day, that "it is